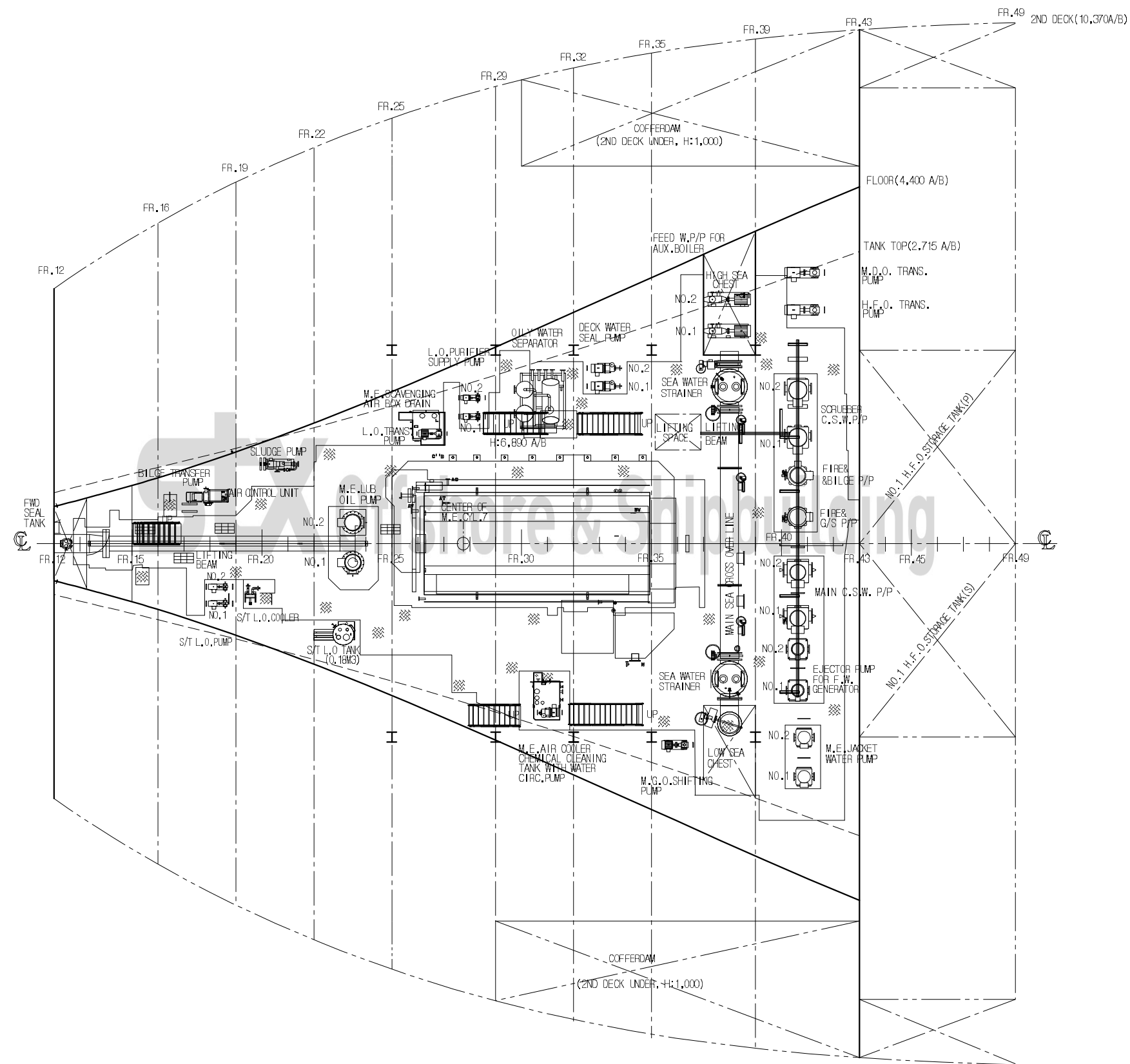


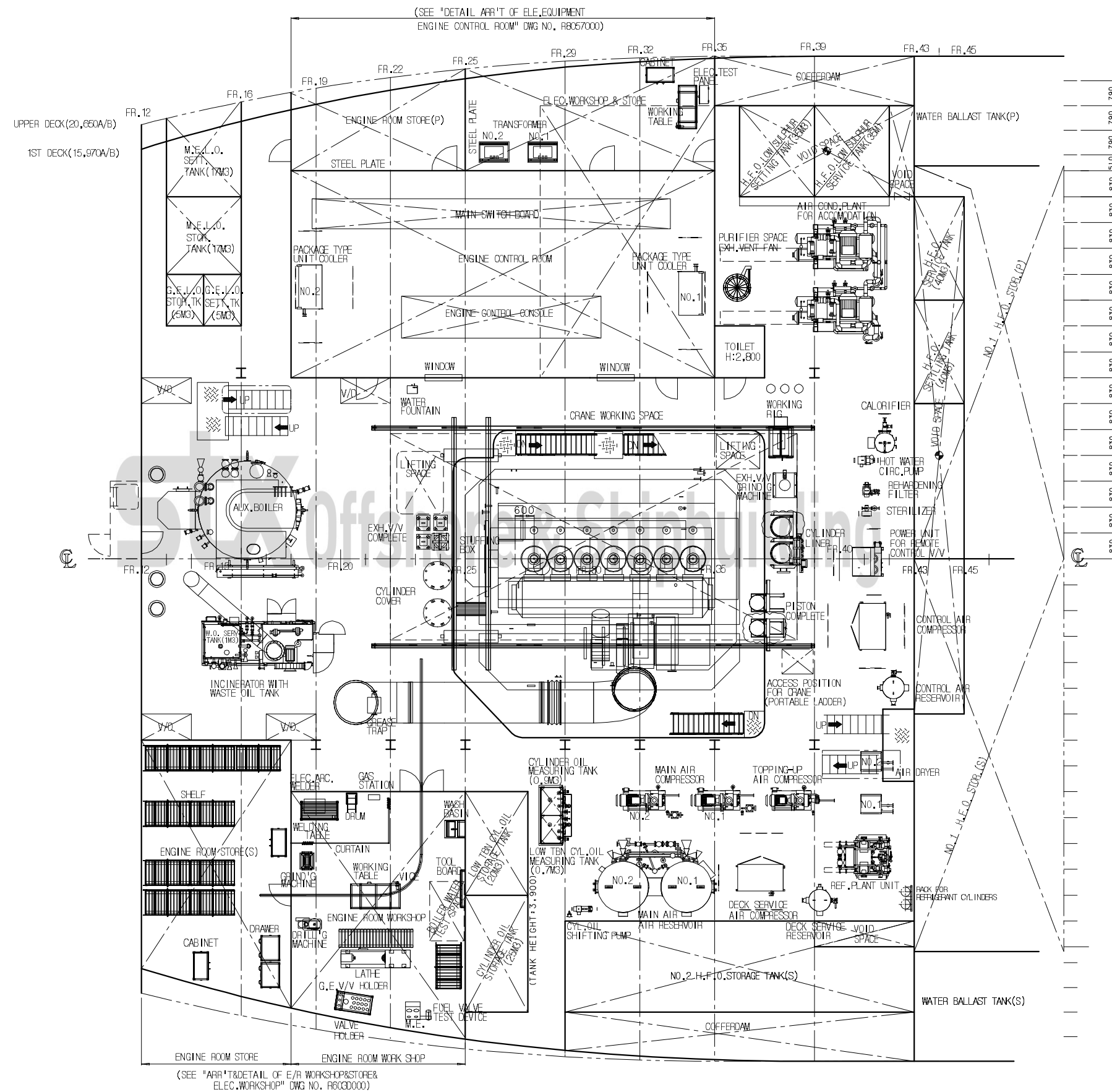
FR.25 SECTION
(SCALE 1/70)

| | | |
|-----------|----------|--|
| MODEL NO. | 60KPC01 | MACHINERY ARRANGEMENT IN E/R TANK TOP PLAN(2,715 A/B) |
| DWG. NO. | B6001000 | |
| SCALE | 1/150 | |



| | |
|-----------|----------|
| MODEL NO. | 60KPC01 |
| DWG. NO. | B6001000 |
| SCALE | 1/150 |

MACHINERY ARRANGEMENT IN E/R
FLOOR PLAN(4,400 A/B)

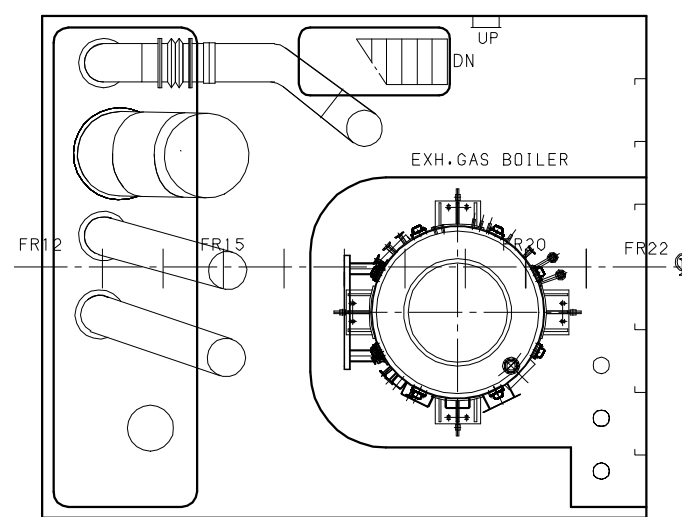


| | |
|-----------|----------|
| MODEL NO. | 60KPC01 |
| DWG. NO. | B6002000 |
| SCALE | 1/150 |

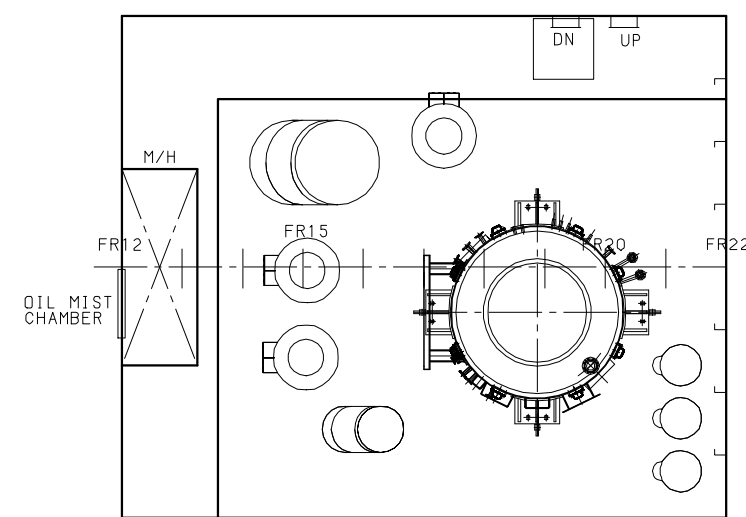
MACHINERY ARRANGEMENT IN E/R
1ST DK PLAN(15,970 A/B)

FORM NAME : STXSE-PC314

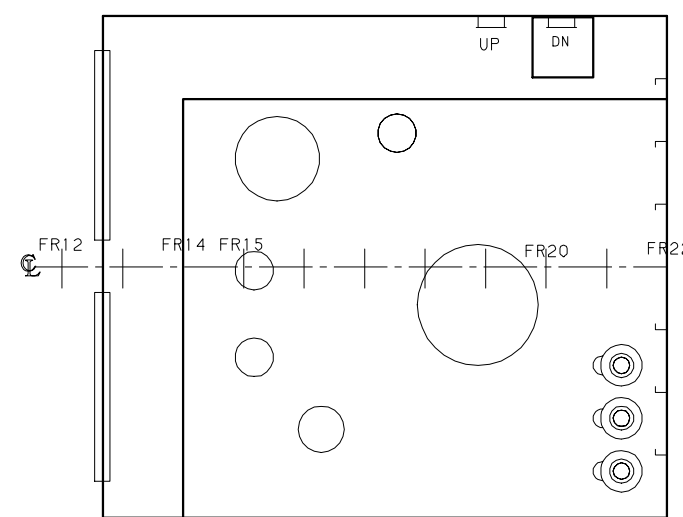
D DECK(33,157 A/B)



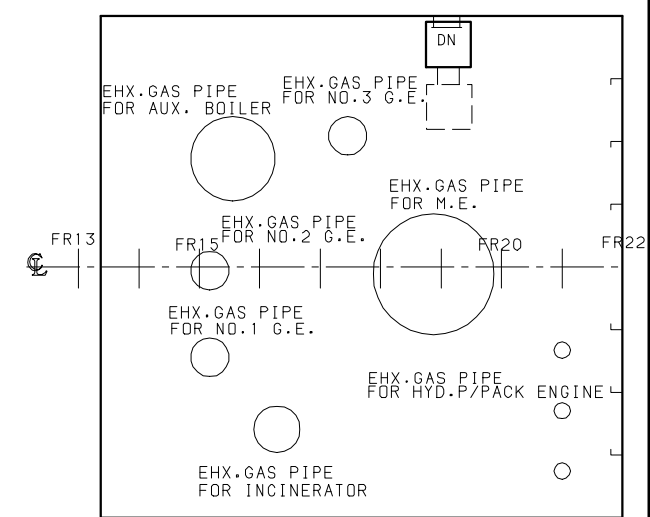
1ST STRINGER(36,057 A/B)



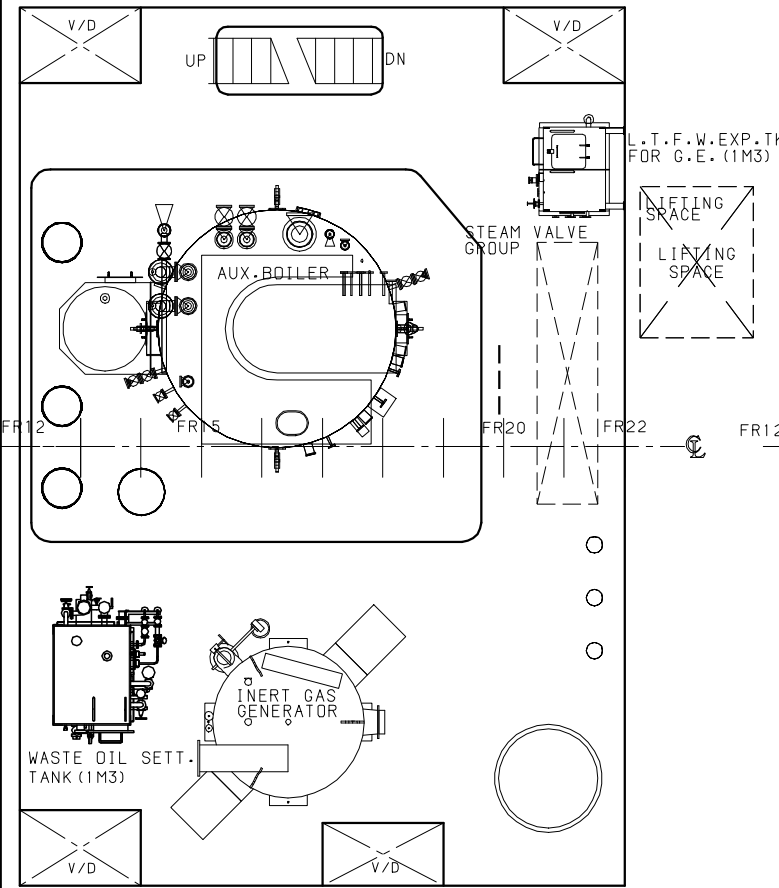
2ND STRINGER(38,907 A/B)



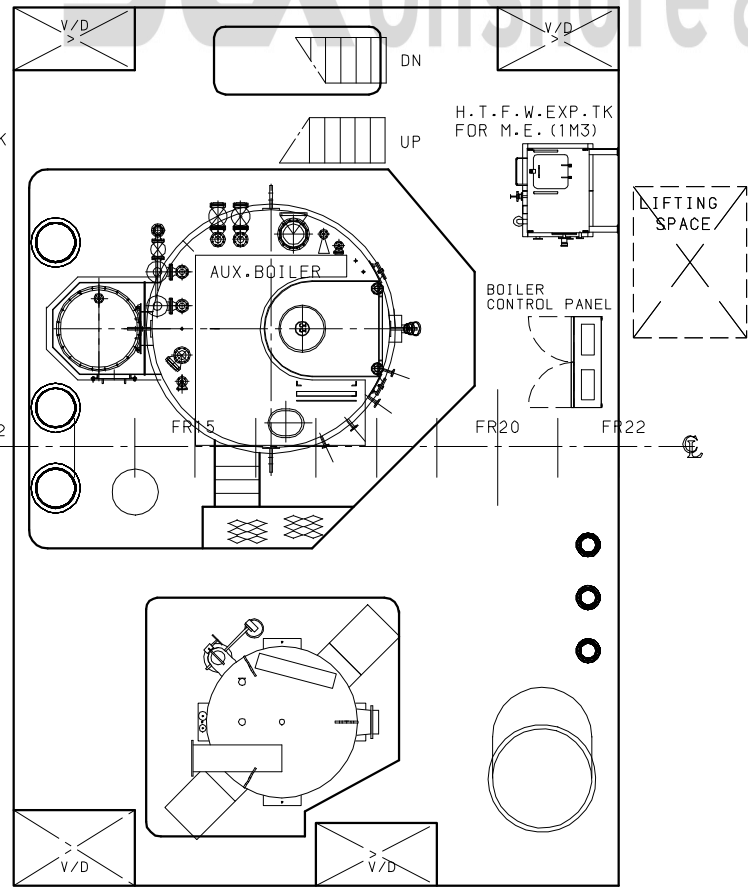
FUNNEL TOP(41,707 A/B)



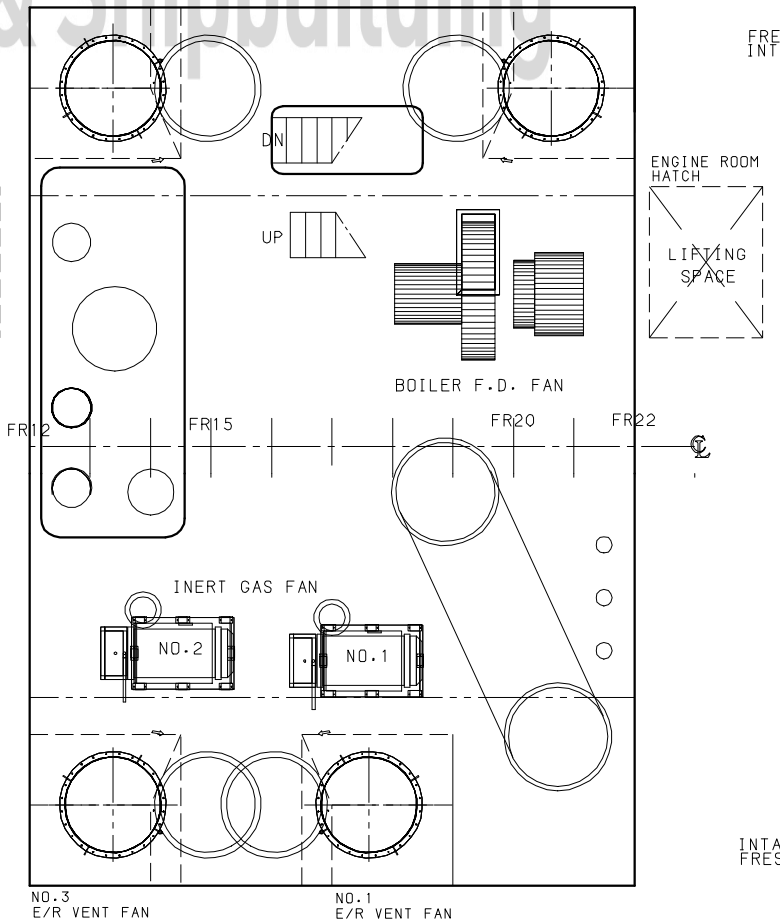
UPPER DECK(21,457 A/B)



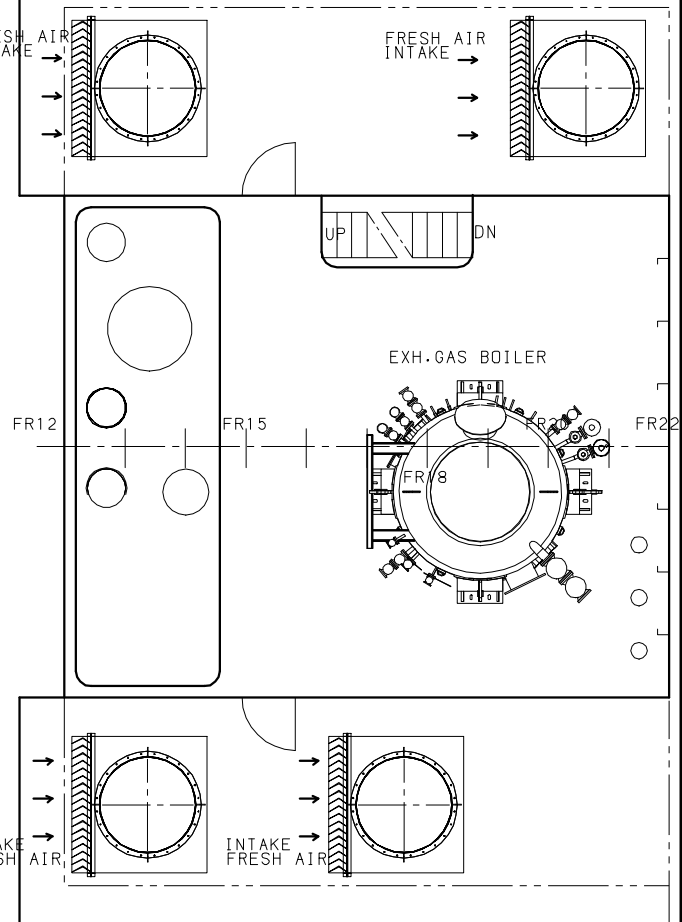
A DECK(24,457 A/B)



B DECK (27,357 A/B)

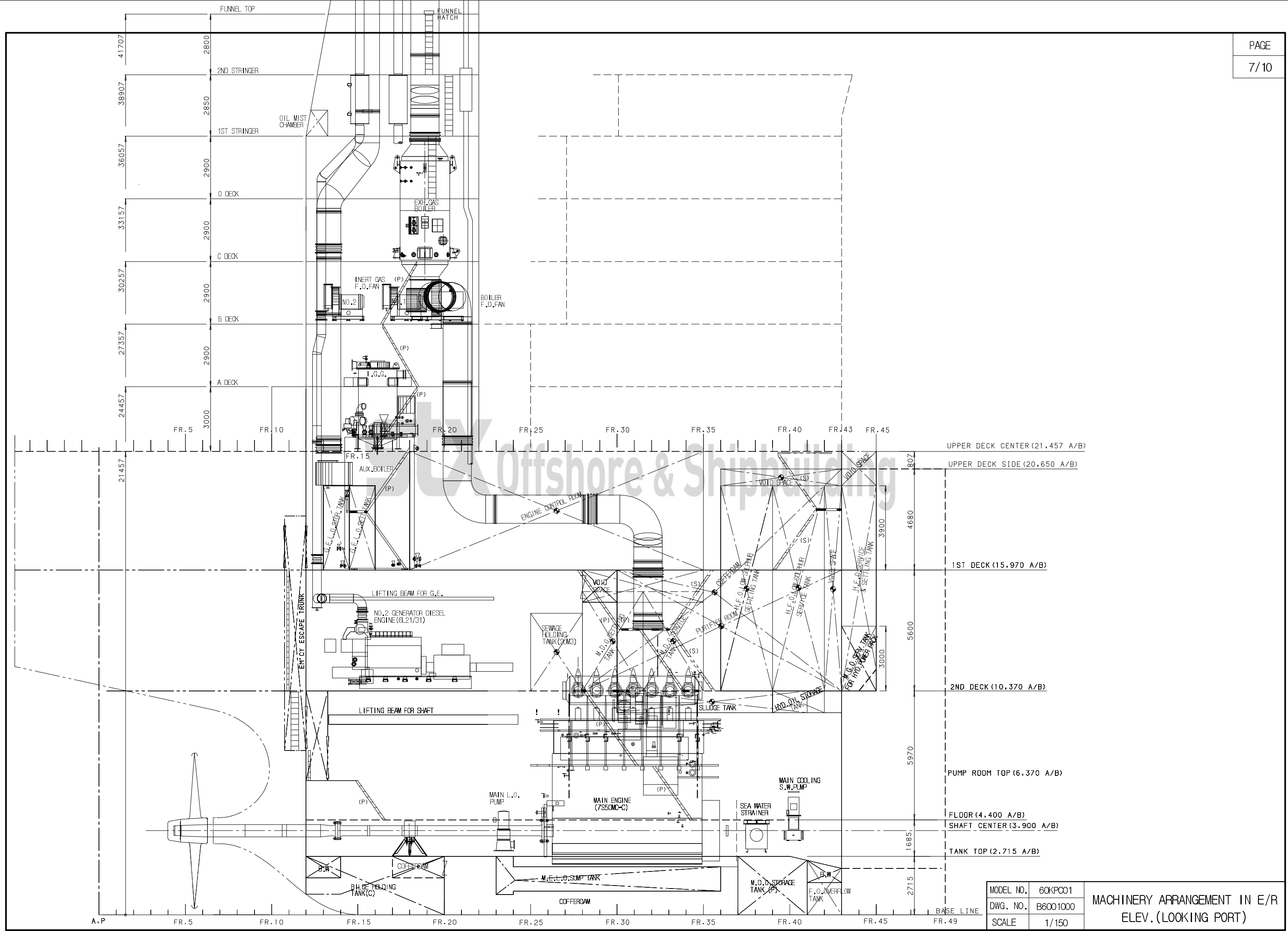


C DECK (30,257 A/B)



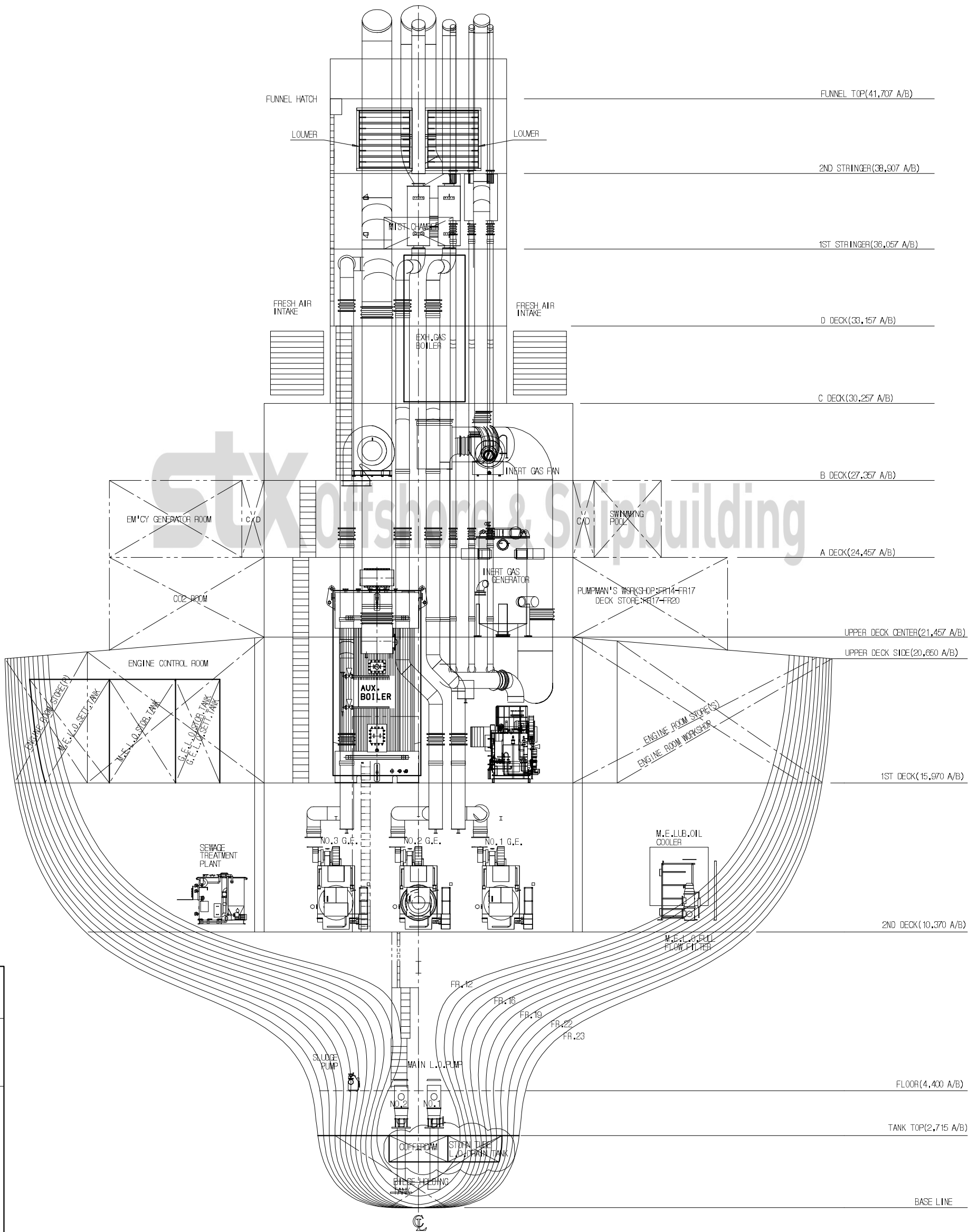
| | |
|-----------|----------|
| MODEL NO. | 60KPC01 |
| DWG. NO. | B6001000 |
| SCALE | 1/100 |

MACHINERY ARR'T IN E/R
CASING & FUNNEL PLAN

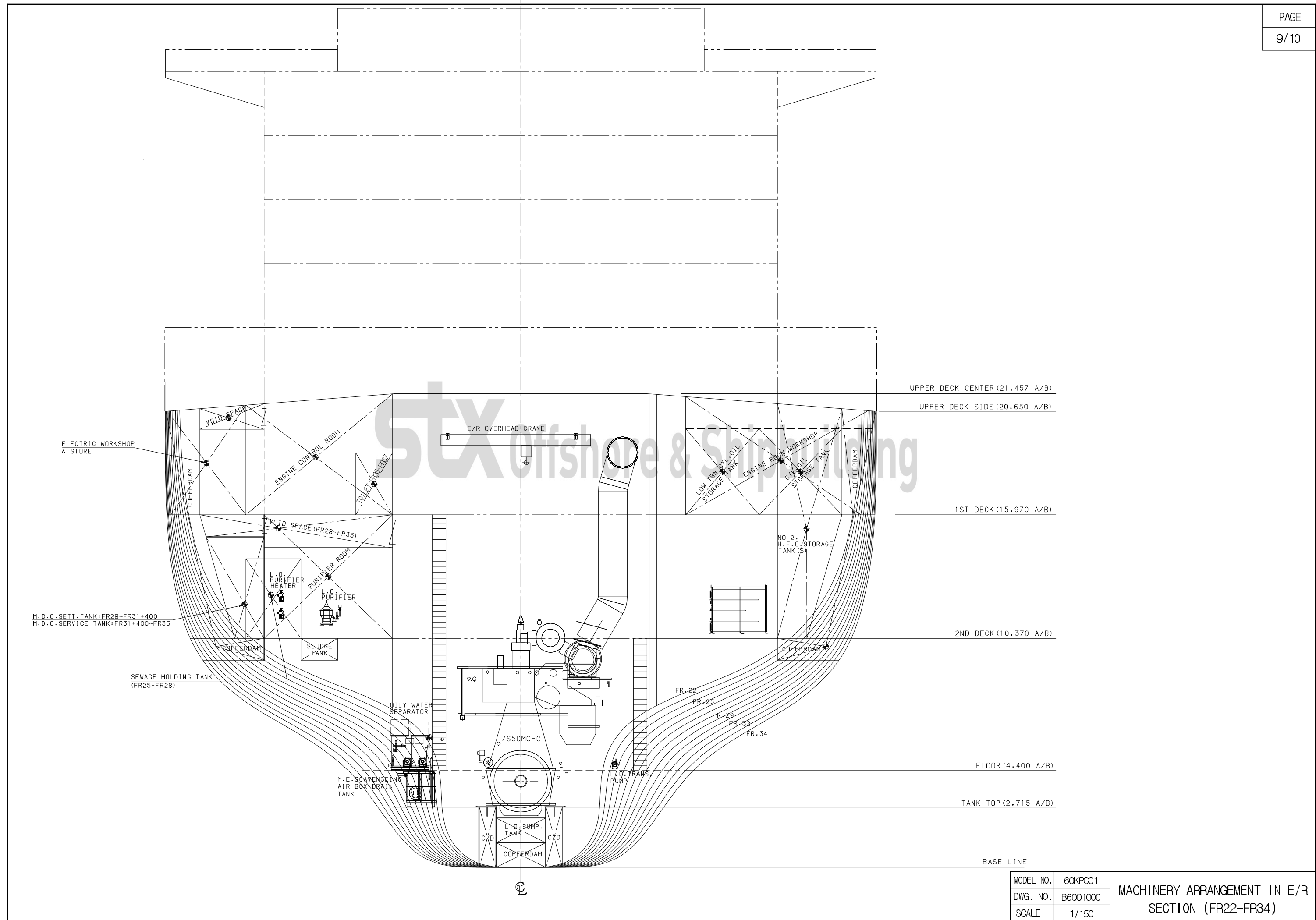


| | |
|-----------|----------|
| MODEL NO. | 60KPC01 |
| DWG. NO. | B6001000 |
| SCALE | 1/150 |

**MACHINERY ARRANGEMENT IN E/R
ELEV. (LOOKING PORT)**

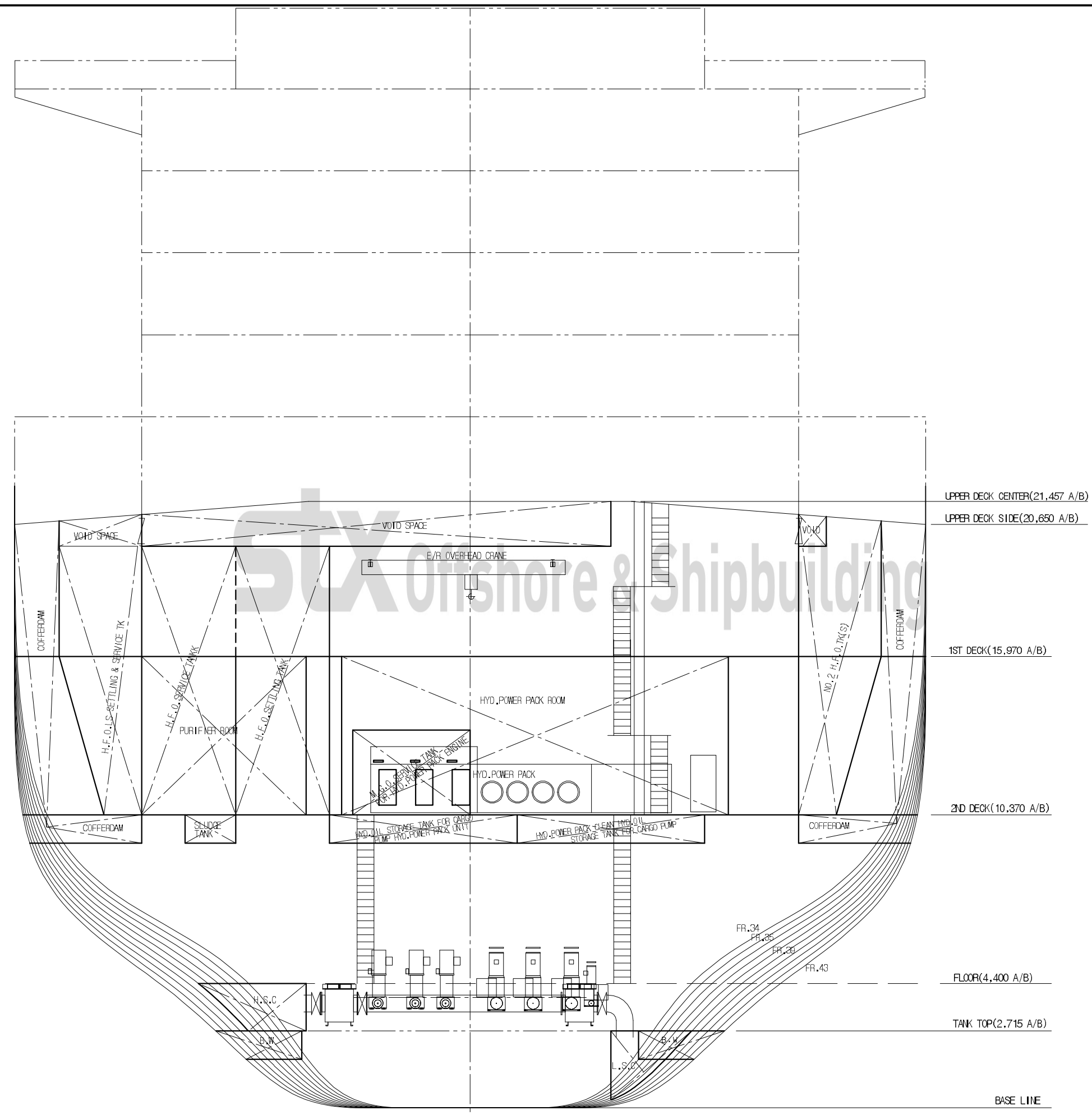


| | | |
|-----------|----------|------------------------|
| MODEL NO. | 604P001 | MACHINERY ARR'T IN E/R |
| DWG. NO. | B6001000 | |
| SCALE | 1/150 | SECTION(FR12-FR23) |



| | |
|-----------|----------|
| MODEL NO. | 60KPC01 |
| DWG. NO. | B6001000 |
| SCALE | 1/150 |

MACHINERY ARRANGEMENT IN E/R SECTION (FR22-FR34)



| | |
|-----------|----------|
| MODEL NO. | 60KPC01 |
| DWG. NO. | B6001000 |
| SCALE | 1/150 |

MACHINERY ARR'T IN E/R
SECTION(FR34-43)