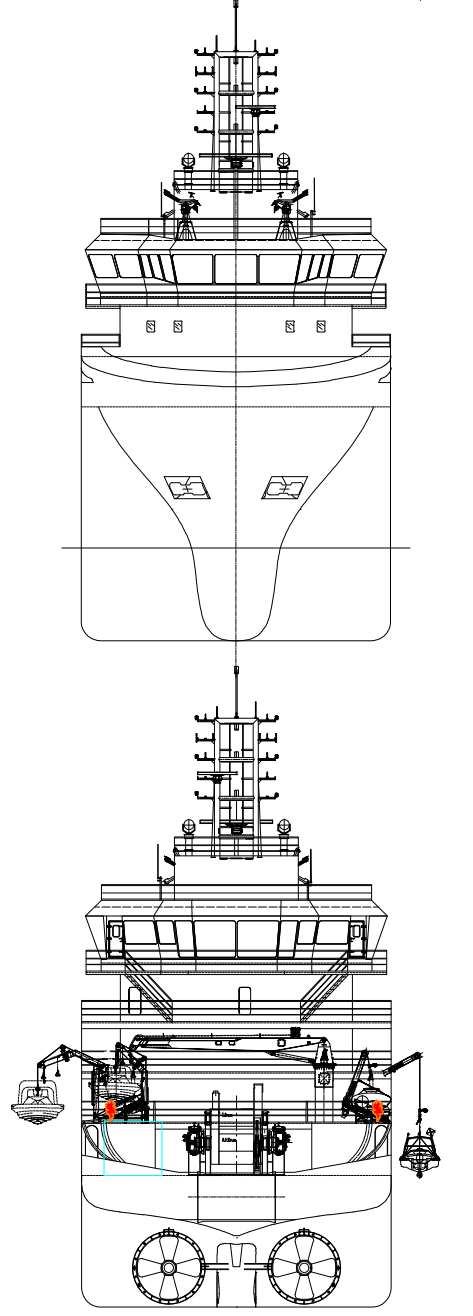
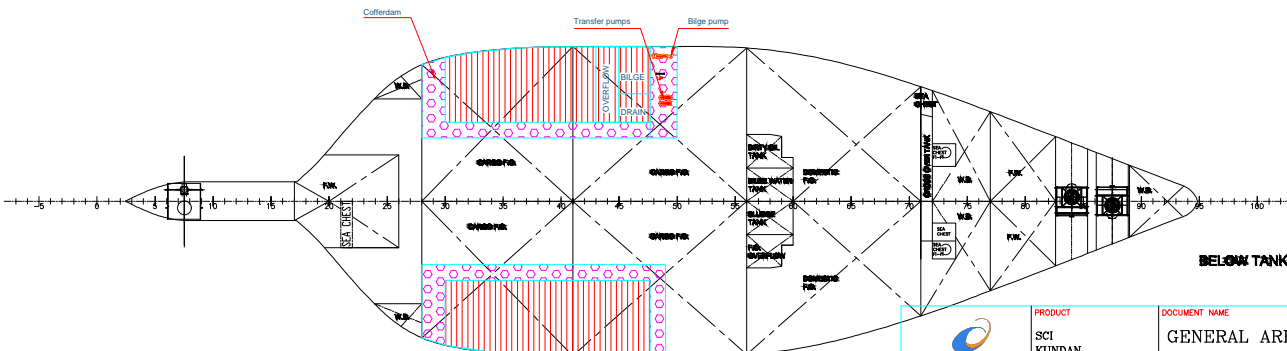
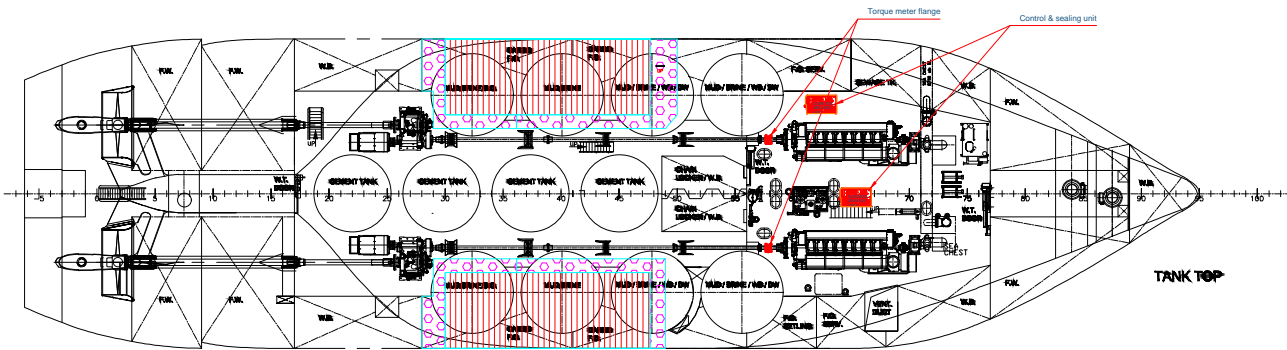
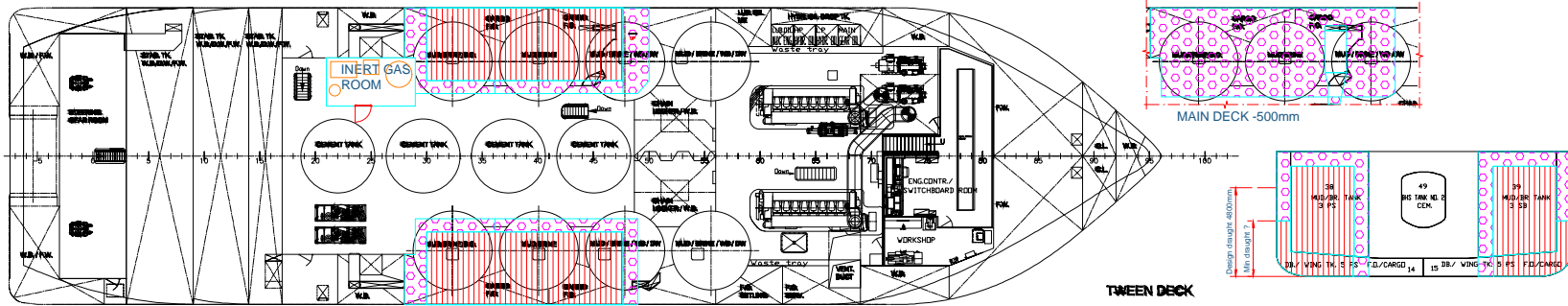
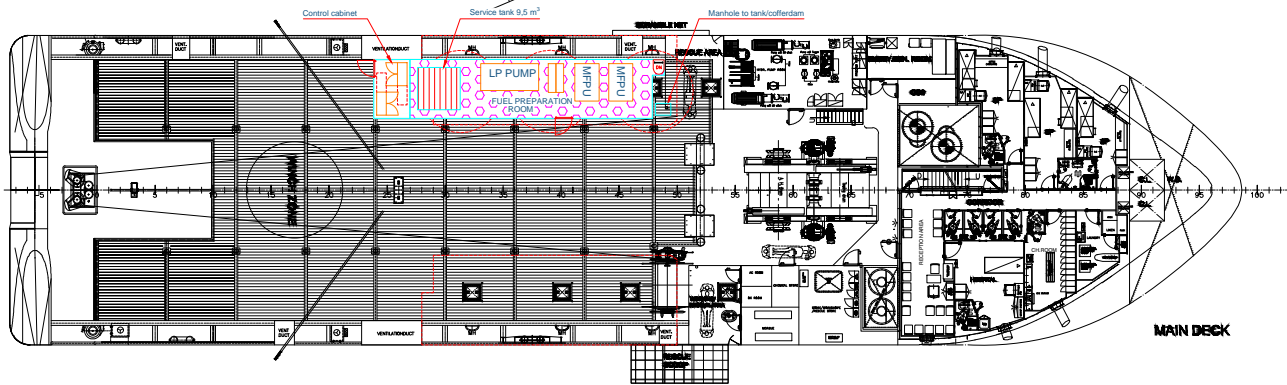
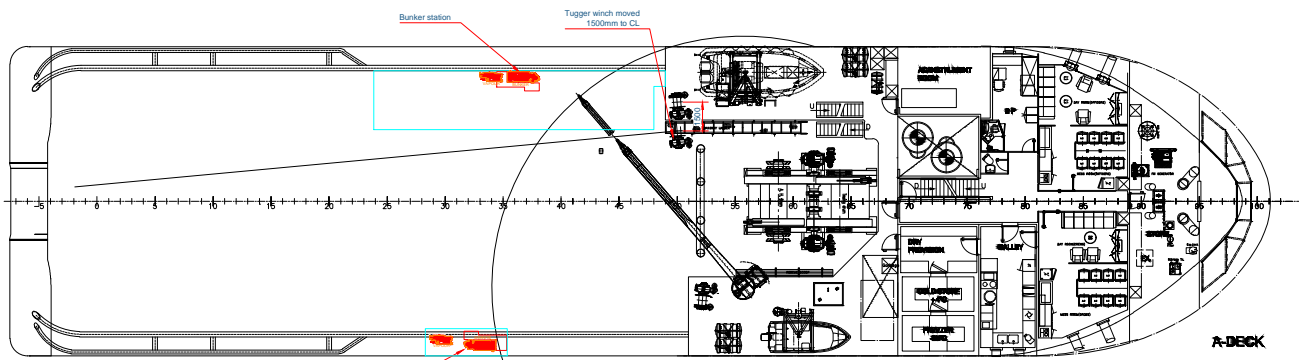
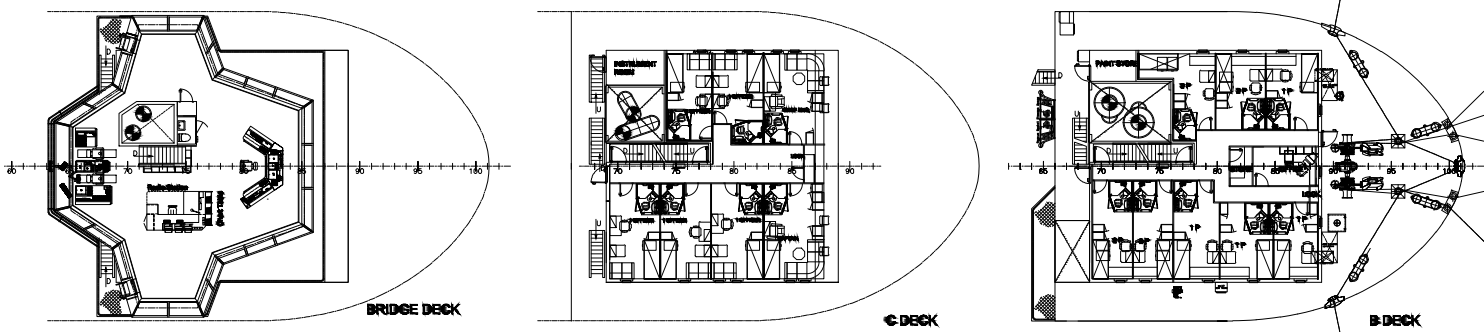
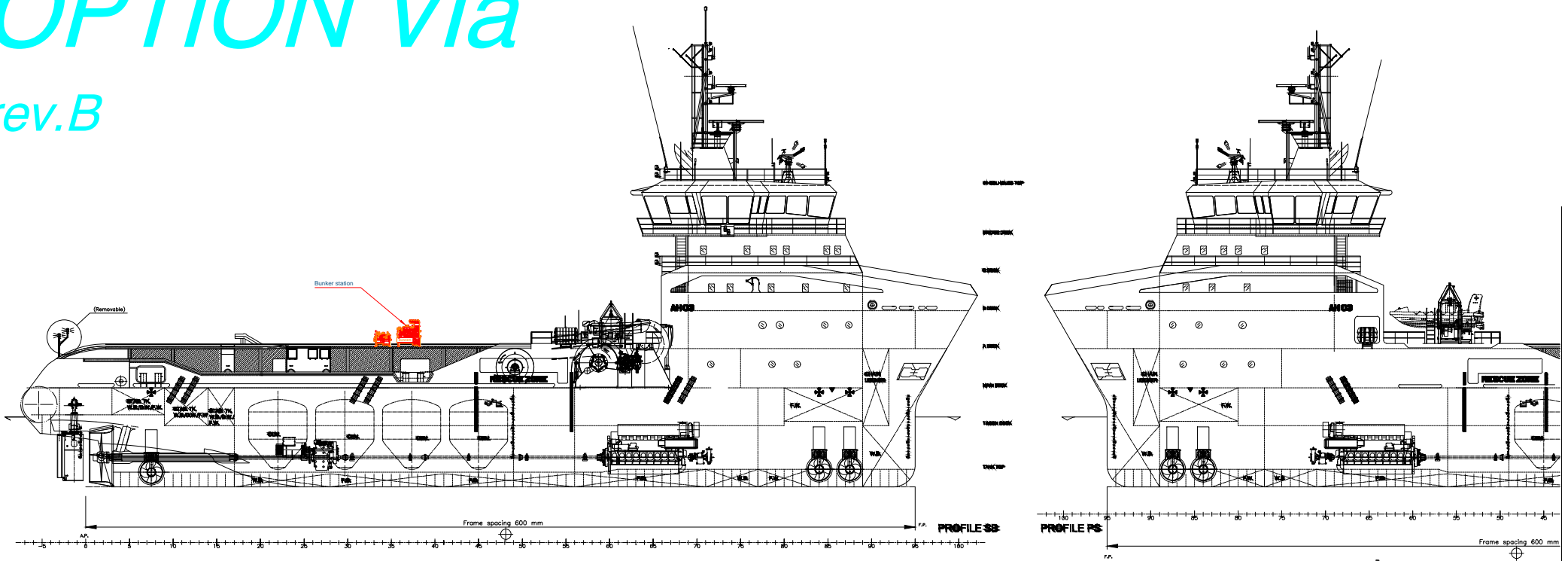


# OPTION VIa

rev.B



### MAIN PARTICULARS (APPROX.)

LOA	85.0m
L.P.P.	27.0m
BREADTH MAIN	16.0m
DEPTH MAIN DK.	6.0m
DESIGN DRAUGHT	4.0m
MAX DRAUGHT	4.8m
BOLLARD PULL	120Tons

### CAPACITIES (APPROX.)

DRY BULK	1200m³
FUEL OIL (CARGO) (INCL. ONSHIPS TICS)	540m³
DOMESTIC FUEL OIL	270m³
FRESH WATER (INCL. ONSHIPS TICS)	300m³
DRILL WATER	200m³
BALLAST WATER (INCL. ONSHIPS TICS)	1140m³
LIQUID MUD	600m³
BRINE	600m³
RISHWIN LOCKER	120m³
DECK CARGO (20' ABOVE M-DECK)	300 Tons
DECK CARGO (20' ABOVE M-DECK)	400m³
DEADWEIGHT AT MAX DRAUGHT	1200 Tons
COMPLEMENT	20 + 1 BERTH IN HOSPITAL

CLASS NOTATION:  
ABS: YAT, 03, AH, OFFSHORE SUPPORT VESSEL, + AMS, + DPE-1, FRV CLASS-T.  
IIR: 15, BUL, ANCHOR HANDLING TUG, 15, IV, DP-1, AGN-1 TOTAL DISCHARGE CAPACITY 2400m³/H.



**COCHIN SHIPYARD LIMITED**  
P.O. Bag 1653, COCHIN-682015, INDIA

YARD No.	BY 80	S.C.I. URJA	IMO No.	9547269	ABS ID	YY190122
OWNER	S.C.I.					
Approved		<b>GENERAL ARRANGEMENT</b>				
Checked						
Drawn	Girish					
Date	: 29 Sep 2012					

**WÄRTSILA**

PRODUCT: SCI KUNDAN  
DOCUMENT NAME: GENERAL ARRANGEMENT OPTION VIa

Units	Basic Materials	Scale	1:150	Format	Sheet	Material ID	Net Weight
Mode	08.04.2024	Pfr		AI	1/1		
Child				Drawing ID			
Appd				Revision			B

**stxEurope**

ABS-IRS 1:150 AYP-275 275-101-001

CLASS Scale PROJECT NO. Dwg. no.

ACCORDING TO INTERNATIONAL LAWS, THIS DRAWING IS THE PROPERTY OF STX Norway Offshore Design AS. THE DRAWING CAN NOT BE MADE PUBLIC, COPIED OR OTHERWISE USED, WITHOUT WRITTEN CONSENT.